



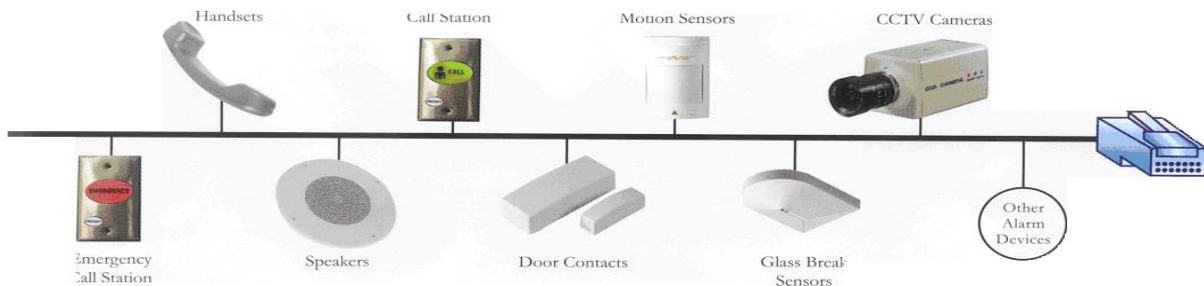
MODULAR INTERCOM COMMUNICATIONS SYSTEM

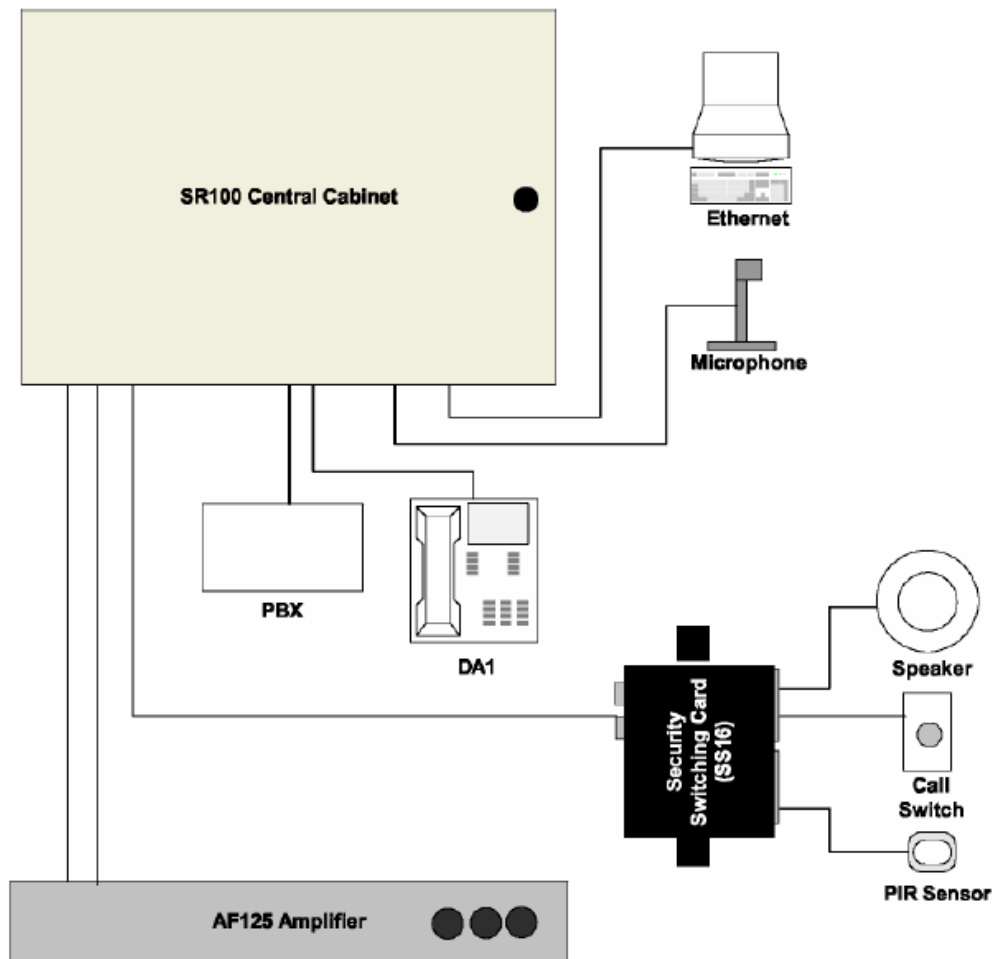
CH1000 SERIES FEATURES

- Advanced Audio Processing
- Up to 8 PBX Access Ports
- Display Administrative Consoles with 8- Line 20- Character Display
- Security Alarms
- 1 Audio Channels
- 16 – 256 Audio/I/O Ports
- 6 Input Ports and 6 Output Ports
- Passive Infrared Sensors
- Door/Window Contacts
- PC Configuration
- Ethernet Port
- Self Diagnostics
- CAT 5 Installation Wiring
- Reduced Wire Installation
- Wall/Rack-Mount Cabinetry
- Two Program Inputs



AdvantiCall takes your traditional paging/intercom system and adds much needed security functions. In this day and age of crime and terrorism adding more security in an institution is considered top priority. It is also just as important to provide a product in a modular format. Today's customer not only wants a reliable system but they want it their way. The goal with **AdvantiCall** is to provide many features and accessories on a modular basis. This eliminates the burden of raising prices to pay for a feature few may want. With this goal in mind **AdvantiCall** brings to market a modular system with a complete array of features and cost-effective choices.





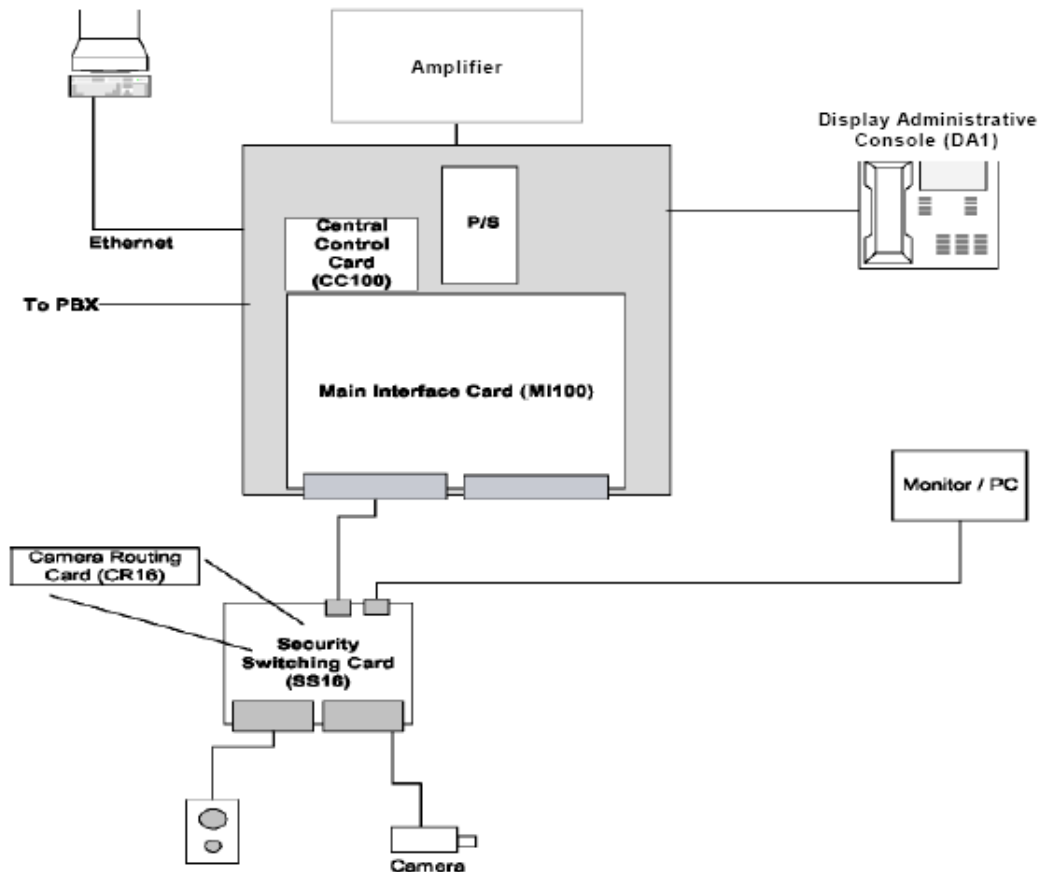
The *CH1000* is an advanced Multi-channel security communications system:

- Up to eight Display Administrative Consoles (DA1's)
- RJ45 connectivity
- Up to 256 audio / I/O ports
- SS16's can be remotely located up to 2700* feet from the central cabinet via a single CAT 5 home run cable
- CS150 modular call stations allow for PIR/door contacts to be daisy chained off of one audio port.
- Half-duplex voice communication from DA1 to audio ports.
- Provision for up to one 25V or 70V audio channels.
- DA1 to DA1 or standard DTMF telephone
- 64 Zones of paging and program Distribution
- Easy to use visual menu on the DA1 to initiate system functions
- Up to three levels of call in priorities
- Six central general I/O ports
- Master clock
- Unlimited event conventional calendar-based scheduling
- 25 built-in tones and a further 25 user-added wav files
- Configuration via PC
- Built-in Ethernet port.

•Full-duplex voice communication from



MODULAR CCTV SYSTEM



- Camera Routing Card (CR16) allow for up to 16 video inputs
- Only upgrade a few ports or the whole system
- CR16 is distributed with the Switching Security Cards (SS16)'s
- Twisted pair color and BW cameras available
- Monitor up to eight cameras simultaneously
- Programmable event-driven video switching
- Monitor via stand-alone monitor, DVR, VCR or PC
- Field-upgradeable



MC1000 Main Cabinet

Wall or Rack Mountable
Compact Design
Durable Powered
Coat Paint
Knock outs for Conduit
Lock Included



The MC1000 Main Cabinet is part of the CH1000 series Security Communications Systems. A MC1000 Main Cabinet is designed to house the PS100 Power Supply, MI100 Main Interface Card, CC100 Central Control Card, TC1 Telephone Communication Card, DAF125 Digital Amplifier, and the IA2 Intercom Card.

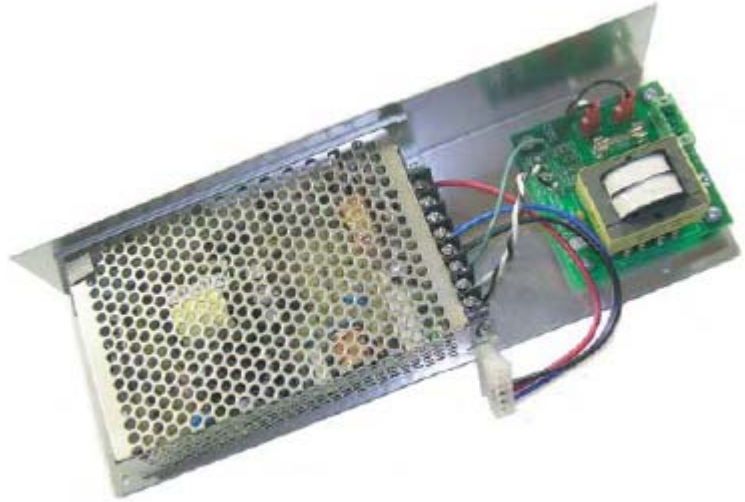
The MC1000 Main Cabinet is built of 16 gauge steel with a light gray or black powered coated finish. The MC1000 can be wall mounted or rack mounted with the optional RM1000 Rack Mount Kit. The cabinet door comes with a lock installed as a standard feature. The MC1000 can accommodate conduit installed into the cabinet for field wiring.

Construction	16 Gauge Steel
Finish	Powered Coat
Color	Gray
Mounting	Rack or Wall
Weight	25 lbs
Dimensions	18.5" x 17" x 5.5"
Required Equipment	None



PS100 Main Power Supply

*55 Watt Output
12V & 5V Rails
DA1 Power
Breakout
Line Cord & Direct
Wiring
Compatible*



The PS100 Main Power Supply Module is part of the CH1000 series Security Communications Systems. A PS100 is a 55 watt dual voltage power supply. Over voltage, overload, and short circuit protection is provided. The PS100 when installed in the MC1000 chassis allows for direct mains wiring or use of the supplied modular power cord. This supply also provides the power necessary for the first DAI installed in the CH1000 system. The PS100 designed to be mounted into the MC1000 Main Cabinet.

Rated Output	13.8V 2.5A, 5V 3A
Power	115 VAC 1.6A
Efficiency	71%
Switching Frequency	45 KHz
Working Temp	-10 ~ +60C
Dimensions	11" x 4.5" x 2"
Required Equipment	MC1000



MI100 Main Interface Card

- 8 TC1 Ports
- 8 SS16 Ports
- 6 Inputs
- 6 Outputs
- Mic Input
- Program Input
- Master Clock Output



The MI100 Main Interface Card is part of the CH1000 series Security Communications Systems. A MI100 provides the platform for all of the other CH1000 modules. Up to 8 TC1's & 8 SS16's can be connected. Interfaces for DAF125 amplifier, IA2 intercom module, program inputs, microphone inputs, master clock output, general purpose inputs and outputs, and an Ethernet port.

A MI100 is installed into the MC1000 Main Cabinet. All connectivity is by means of RJ45 and screw terminals.

Function	Primary control platform
Power	12VDC
Terminations	RJ45, Terminal Strips
No. TC1 Slots	8
No SS16 Ports	8
Dimensions	15" x 10" x 2"
Required Equipment	MC1000



CC100 Central Control Card

*400 MHz CPU
32 MB of RAM
32 MB of Static RAM
Compact Flash Slot
Ethernet*



The CC100 Central Control Card is part of the CH1000 series Security Communications Systems. A CC100 provides the control platform for the CH1000. The CC100 is installed in to the MI100 Main Interface Card. The CC100 handles all of the processing of the events generated by the CH1000 platform.

A CC100 includes a compact flash slot for ease of software upgrades and installing new user WAV files. The design of the CC100 allows for excess processing power and memory for future feature upgrades with out having to replace any hardware.

Function	Primary processing platform
Power	12VDC
Terminations	PC104
Processor	X-scale, 400 MHz
Memory	32M RAM / 32M SRAM
Dimensions	3.5" x 3.5" x .5"
Required Equipment	MI100



IA1 Intercom Amplifier Module

*Adds 1 Intercom Path
Plug in Connectivity*



The IA1 Intercom Amplifier Module is part of the CH1000 series Security Communications Systems. An IA1 adds one intercom path that can be used for a DA1 Display Administrative Console to room speaker communication. The IA1 provides the vox control, listen circuit, and talk amplifier for the intercom path. The IA1 is designed to be installed into the MC1000 Main Cabinet.

The IA1 provides talk level and VOX sense adjustable potentiometers on the PCB itself.

Function	VOX, Listen , Amp
Power	12VDC
Terminations	IDC Cables
Adjustments	Talk level, VOX Sens
Capacity	1 Communication Path
Dimensions	2" x 3" x 1"
Required Equipment	MC1000



IA2 Intercom Amplifier Module

*Adds 1 Intercom Path
Plug in Connectivity*



The IA2 Intercom Amplifier Module is part of the CH1000 series Security Communications Systems. An IA2 adds one intercom path can be used for a DA1 Display Administrative Console to room speaker communication. The IA2 provides the vox control and listen circuit for the intercom path. The IA2 is designed to be installed onto the DAF125 Digital Amplifier. The DAF125 provides the amplification for the IA2.

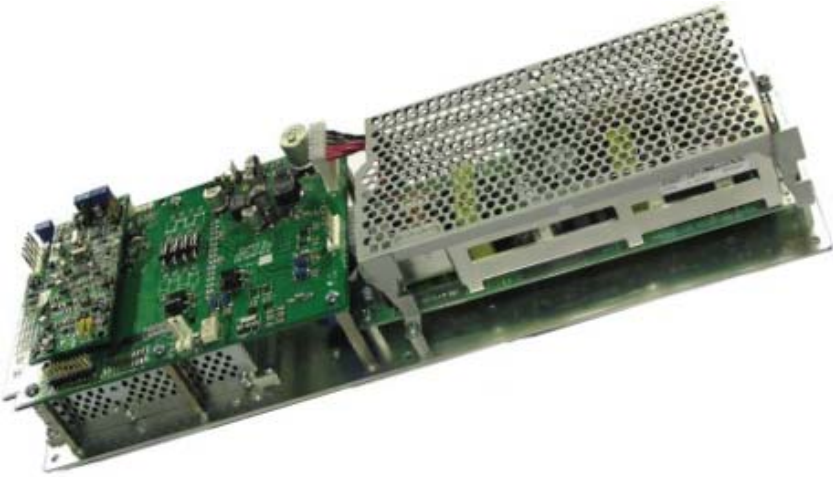
The IA2 and DAF125 combination provides crystal clear highly intelligible telephone to speaker communications.

Function	VOX, Listen Circuit
Power	12VDC
Terminations	Plugs into a DAF125
Adjustments	Listen Level
Capacity	1 Communication Path
Dimensions	1.5" x 2" x .25"
Required Equipment	DAF125



DAF125 Dual Digital 125 Watt Amplifier

*2 x 125 Watt 25V
Output
Class D
5 Band EQ
Compact Design*



The DAF125 Digital Amplifier is part of the CH1000 series Security Communications Systems. A DAF125 is a Class D digital dual channel amplifier. One of the 125 watt channels provides all program and paging amplification. The second 125 watt channel acts as a crystal clear intercom amplifier when the IA2 Intercom Module is installed. The DAF125 has a factory optimized digital equalizer for enhanced audio intelligibility.

A DAF125 designed to be mounted into the MC1000 Main Cabinet. Thermal cutout, overload detection and automatic shutdown are addition safety features of the DAF125.

Rated Output	125 Watts RMS, 25V
Power	120 VAC 1.7A
Distortion THD+N	<0.2% at 90% power
Frequency Response	200 Hz to 20 KHz
Input Sensitivity	350 mV full output
Dimensions	16" x 4.5" x 2.5"
Required Equipment	MC1000, TC1



SS16 Security Switching Card

*16 Audio/IO Ports
Optional 16 Port
Camera
Card Available
RJ45 Terminations
Wall/Ceiling Mount
35 Watts Per Port*



The SS16 Security Switching Card is part of the CH1000 series Security Communications Systems. A SS16 adds 16 audio/IO ports that provide annunciation call-in with full communications capabilities with the DA1 Display Administrative Console. Security sensors, speakers, and call-in switches can all be used with a SS16.

The SS16 is designed to be a distributed component and as such can be wall or ceiling mounted up to 2700* feet from the CH1000 central cabinet. Each SS16 only requires one CAT 5 cable home run back to the central. Power is provided by the central therefore no local power supplies are needed**.

Ports	16 Audio / IO
Power	12VDC, 150mA Max
Terminations	RJ45
Max Output	35W / Port 35W / Card
Dimensions	5.5" x 6" x 1.75"
Weight	0.5 lbs
Required Equipment	CH1000 Central

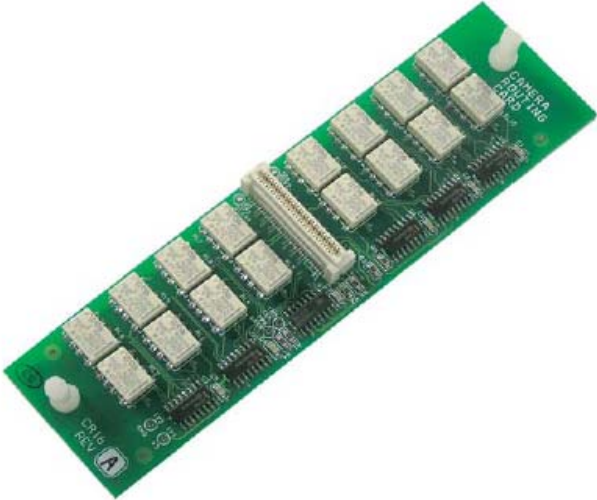
*See Installation Manual for details

**Can be locally powered with a 12VDC 200mA+ rated adapter



CR16 Camera Routing Card

*Adds 16 Camera Ports
to a SS16
Field Installable
Supports Low Cost
UTP Cameras*



The CR16 Camera Routing Card is part of the CH1000 series Security Communications Systems. A CR16 adds twisted pair (UTP) camera capability to the SS16 Security Switching Card Ports. The CR16 will support video switching functions for up to 16 cameras with 1 live feed. Thus giving a full sized CH1000 system up to 128 cameras with 8 simultaneous live feeds.

One additional CAT 5 home run cable is required from the SS16 to a video display or DVR. Through system programming and DA1 console cameras can be activated on demand, sequenced, scheduled, or triggered by an event such as a motion sensor.

Ports	16 Video Ports
Power	12VDC
Terminations	Plugs into a SS16
Camera Type	Balanced Twisted Pair
Dimensions	5" x 1.5" x .25"
Weight	1 oz
Required Equipment	SS16, DVR



TC1 Telephone Communication Card

*Adds 1 DA1/Standard
Telephone Port
Caller-ID
Field Installable
PBX Compatible*



The TC1 Telephone Communication Card is part of the CH1000 series Security Communications Systems. A TC1 adds one telephone port that can be used for a DA1 Display Administrative Console, a standard telephone, caller-ID phone, or interface to a PBX.

A TC1 plugs into the MI100 Main Interface Card thus allowing for field installation. All wiring to the DA1, telephone, or PBX is CAT 5 terminated with a RJ45. TC1's support Analog Central Office ports from most PBX systems. Caller-ID information is passed to and from the TC1 to display phones and PBX connections.

Ports	1 Telephone Port
Power	12VDC
Terminations	Plugs into a MI100
Phone Type	DA1, Analog, Caller-ID
PBX	Analog CO Port
Dimensions	1.5" x 2" x .25"
Required Equipment	MI100



DA1 Display Administrative Console

Backlit Display
Menu Driven Functions
Caller-ID
Speakerphone
200 Speed Dials



The DA1 Display Administrative Console is part of the CH1000 series Security Communications Systems. A DA1 provides a control center for all paging, intercom, and telephone communications. The DA1 8 line by 20 character backlit display provides a clear visual information center. Each DA1 requires one TC1 Telephone Communication Card. The CH1000 system supports up to 8 DA1's.

The DA1 provides soft keys that interface with the dynamic menu systems that simplifies system functions. 200 local speed dials are available to automate any room number, telephone number, system functions.

Construction	High impact flame retardant plastic
Power	12VDC, 150mA
Color	Gray
Mounting	Wall or desk
Weight	2.3 lbs
Dimensions	8" x 9" x 3.45"
Required Equipment	TC1



CS50 Call Station

*Single Gang
Stainless Steel
Rocker Style Switch
Privacy
RJ45 Connectivity*



The CS50 Call Station is part of the CH1000 series Security Communications Systems. A CS50 Call Station provides a momentary push button to annunciate a call to the DA1 Display Administrative Console as well as a latching privacy switch. Normal and emergency call-ins can be initiated from the CS50 interfaced with a SS16 Security Switching Card audio port.

The CS50 provides RJ45 connectivity with a pig tail for speaker connection. Construction consists of rugged rocker style switch mounted to brushed stainless steel plate for durability.

Construction	Stainless Steel
Terminations	RJ45
Switch Type	Rocker
Mounting	Single Gang Box
Weight	2.5 oz
Dimensions	4.5" x 2.75" x 1"
Required Equipment	SS16



CS100 Call Station

*Single Gang
Stainless Steel
Durable Silicon Button
RJ45 Connectivity*



The CS100 Call Station is part of the CH1000 series Security Communications Systems. A CS100 Call Station provides a call-in push button to annunciate a call to the DA1 Display Administrative Console. Normal and emergency call-ins can be initiated from the CS100 interfaced with a SS16 Security Switching Card audio port.

The CS100 provides RJ45 connectivity with two breakout RJ45's for a camera and speaker. Construction consists of epoxy coated silicon push button mounted to brushed stainless steel plate for durability.

Construction	Stainless Steel
Terminations	RJ45
Switch Type	Silicon on gold
Mounting	Single Gang Box
Weight	2.5 oz
Dimensions	4.5" x 2.75" x 1"
Required Equipment	SS16



HS100 Hand Set Station

*Single Gang
Stainless Steel
25V Intercom
Soft Gray Security
Style Handset*



The HS100 Hand Set Station is part of the CH1000 series Security Communications Systems. A HS100 interfaces with a SS16 Security Switching Card audio port. The HS100 allows for 25V private intercom conversation with a DA1 Display Administrative phone, Standard phone, or PBX phone. When an intercom call is placed to a SS16 port the HS100 can allow a user to automatically switch from an associated overhead speaker to the handset by lifting it off of its cradle.

The HS100 is built with a rugged plastic handset mounted on to a single gang stainless steel plate for durability.

Construction	Stainless Steel
Audio	25V
Terminations	Pig tail
Mounting	Single Gang Box
Feature	Switches local speaker
Dimensions	4.5" x 2.75" x 1"
Required Equipment	SS16



HS120 Hand Set Station

*Dual Gang
Stainless Steel
25V Intercom
Call-in/Privacy
RJ45 Connectivity*



The HS120 Hand Set Station is part of the CH1000 series Security Communications Systems. A HS120 interfaces with a SS16 Security Switching Card audio port. The HS120 allows for 25V private intercom conversation with a DA1 Display Administrative phone, Standard phone, or PBX phone. A HS120 can initiate a call in to a DA1 with the integrated rocker style call in switch. The HS120 can be put into a privacy mode that mutes the handset and associated speaker.

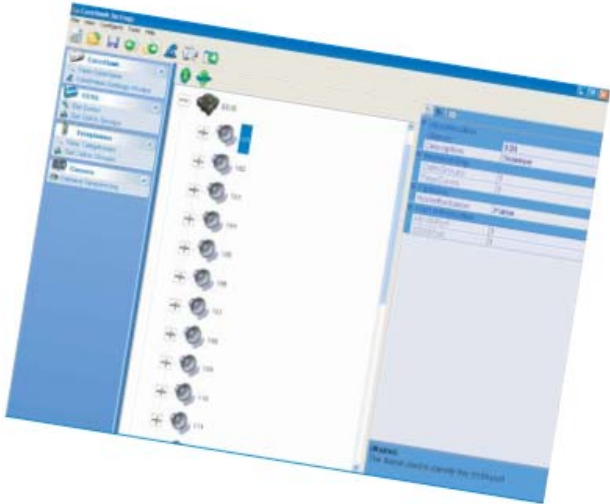
When an intercom call is placed to a SS16 port the HS120 can allow a user to automatically switch from an associated overhead speaker to the handset by lifting it off of its cradle. The HS120 is built with a rugged plastic handset mounted on to a dual gang stainless steel plate for durability.

Construction	Stainless Steel
Audio	25V
Terminations	RJ45
Switch type	Rocker c/w Privcy
Mounting	Double Gang Box
Dimensions	4.5" x 4.5" x 1"
Required Equipment	SS16



SETTINGS Configuration Tool

*Wizard Driven
User Friendly
Windows™ Based*



The **SETTINGS** Configuration Tool is part of the CH1000 series Security Communications Systems. **SETTINGS** provides everything you need to program a CH1000 Security Communications System. All of the options required to be setup are presented in a easy to understand wizard format. System topography is viewed via a graphical icon tree. Configuration files can be saved locally for backup or emailed to a site. No dedicated computer is required. **SETTINGS** comes with every CH1000 Security Communications System.

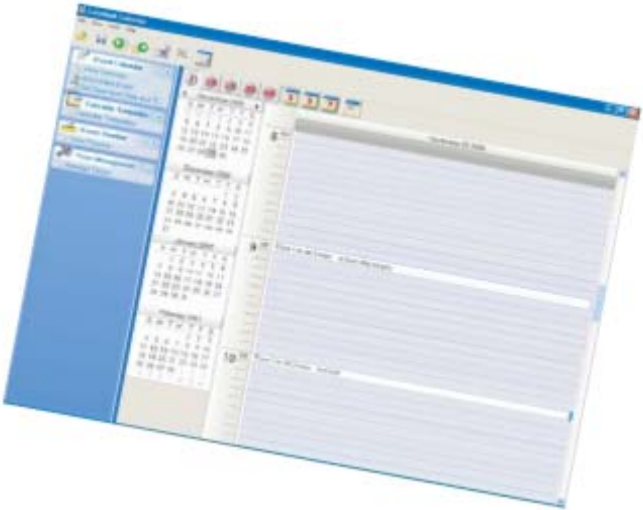
SETTINGS is built on the .NET framework of MS Windows™. **SETTINGS** is compatible with Windows™ 98, 98SE, 2000, and XP.

Platform	MS Windows™
File Format	XML
HD Requirement	500 KB
CPU Requirement	PIII 1GHz
Memory	128 MB
OS Options	.Net Framework
Required Equipment	CH1000



CALENDER Scheduling Tool

*Wizard Driven
User Friendly
Windows™ Based*



The **CALENDER** Scheduling Tool is part of the CH1000 series Security Communications Systems. **CALENDER** provides everything you need to schedule events on a CH1000 Security Communications System. All of the scheduling functions are presented in an easy to understand wizard format. An Outlook™ like calendar interface helps to organize events and schedules. Schedule files can be saved locally for backup or emailed to a site. No dedicated computer is required. **CALENDER** comes with every CH1000 Security Communications System.

CALENDER is built on the .NET framework of MS Windows™. **CALENDER** is compatible with Windows™ 98, 98SE, 2000, and XP.

Platform	MS Windows™
File Format	XML
HD Requirement	500 KB
CPU Requirement	PIII 1GHz
Memory	128 MB
OS Options	.Net Framework
Required Equipment	CH1000